



SAW Components

Data Sheet R 2706





SAW Components

R 2706

Resonator

915,00 MHz

Data Sheet

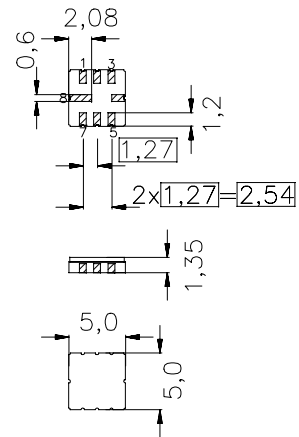
SMD Ceramic package QCC8C

Features

- 2-port resonator
- nominal 180°-phase at resonance
- Provides reliable, fundamental mode, quartz frequency stabilization i.e. in transmitters or local oscillators

Terminals

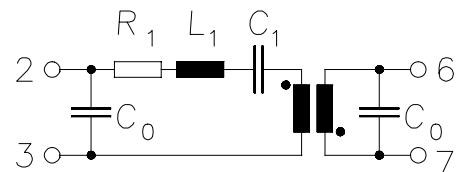
- Ni, gold plated



Dimensions in mm, approx. weight 0,1 g

Pin configuration

- | | |
|-----|-------------------------|
| 2 | Input / Output |
| 6 | Output / Input |
| 7 | Ground (Input / Output) |
| 3 | Ground (Output / Input) |
| 4,8 | Ground (case) |



Type	Ordering code	Marking and Package according to	Packing according to
R2706	B39921-R2706-U310	C61157-A7-A56	F61074-V8070-Z000

Electrostatic Sensitive Device (ESD)

Maximum ratings

Operable temperature range	T_A	-45/+85	°C	between any terminals
Storage temperature range	T_{stg}	-45/+85	°C	
DC voltage	V_{DC}	0	V	
Source power	P_s	0	dBm	


SAW Components
R 2706
Resonator
915,00 MHz
Data Sheet
Characteristics

Reference temperature: $T_A = 25\text{ °C}$
 Terminating Source impedance: $Z_S = 50\ \Omega$
 Terminating Load impedance: $Z_L = 50\ \Omega$

		min.	typ.	max.	
Center frequency (center frequency between 3 dB points)	f_c	914,65	915,00	915,35	MHz
Minimum insertion attenuation	α_{\min}	—	7,0	9,0	dB
Phase at f_c	φ	—	130	—	° el.
Loaded quality factor	Q_L	3500	4300	—	
Unloaded quality factor	Q_U	6000	7600	—	
Ageing of f_c		—	—	± 50	ppm
Equivalent circuit elements					
Motional capacitance	C_1	—	0,225	—	fF
Motional inductance	L_1	—	134,5	—	μH
Motional resistance	R_1	—	100	—	Ω
Input / Output capacitance	C_0	—	1,9	—	pF
Temperature coefficient of frequency ¹⁾	TC_f	—	-0,03	—	ppm/K ²
Turnover temperature	T_0	0	—	30	°C

¹⁾ Temperature dependence of f_c : $f_c(T_A) = f_c(T_0)(1 + TC_f(T_A - T_0)^2)$



SAW Components

R 2706

Resonator

915,00 MHz

Data Sheet

Published by EPCOS AG

Surface Acoustic Wave Components Division, SAW CE AE PD

P.O. Box 80 17 09, D-81617 München

© EPCOS AG 2001. All Rights Reserved.

As far as patents or other rights of third parties are concerned, liability is only assumed for components per se, not for applications, processes and circuits implemented within components or assemblies.

The information describes the type of component and shall not be considered as assured characteristics.

Terms of delivery and rights to change design reserved.

For questions on technology, prices and delivery please contact the sales offices of EPCOS AG or the international representatives.

Due to technical requirements components may contain dangerous substances. For information on the type in question please also contact one of our sales offices.